



Midwest Built. Midwest Tough. Guaranteed for Life.

It All Starts With The Basics



Mission Statement

The mission of Minnkota Windows is to be an industry leader in quality manufactured vinyl window products for profit. Minnkota Windows will adhere to a culture of building leadership, continuous improvement and will always be accountable and respectful to its employees, customers, suppliers and owners by providing solutions and building trust.

Minnkota offers a wide selection of windows and doors including: casement, single- and double-hung, single- and double-slider, awning, picture, bay, bow and specialty designs. We also offer outstanding sliding and swinging patio doors. All of which never require scraping, staining or painting.

Our windows and doors are manufactured in Fargo, North Dakota, by skilled craftsmen with a work ethic as solid as the products they build.

Our windows and doors are designed and built for years of lasting value and enduring beauty. These products offer virtually maintenance-free operation for years of comfortable living.

Our quality control and pride in craftsmanship ensure a product that meets or exceeds the toughest of building codes. For this reason we offer our customers the best warranty in the industry.

Imagine all the ways you can remodel or design custom windows and doors. We offer freedom and control of limitless ideas.

Welcome to Minnkota Windows!

Our Values

- Safety: 24/7 awareness
- Integrity: We mean what we say and say what we mean.
- Humility: We don't define our success by what we do, but by what our customers do.
- Focus: All we do is windows. We know what we're good at, and we stick to it.
- Knowledge: We bring expertise to every project that can only come with decades of time-in-trade.
- Confidence: We know windows.
We're not arrogant – we instill confidence because we have expertise and experience.
- Commitment: Everyone steps up.

Minnkota Windows takes pride in partnering with the leaders in the industry to provide the best product for our customers. That means energy efficiency, durability and ease of use for decades to come. Making your purchase a sound investment.

Our Frame

REHAU®– the leading supplier of high-performance, polymer-based construction components provides the finest in polymer lineals for our custom construction. REHAU engineers window and door designs that enhance comfort and convenience, reduce energy costs and create healthy, safe environments while conserving resources.

REHAU delivers “Unlimited Polymer Solutions” and is the premium worldwide brand for polymer-based innovations with systems in construction, automotive manufacturing and industry. Strong development capabilities and synergistic efficiencies based on experience give the company its unique and respected presence worldwide.



The Inside Story

As with our frames, we at Minnkota Windows are proud to provide our customers the finest in glass as well.

Cardinal's Endur spacer is an entirely new warmer edge stainless steel spacer, improving sightline temperature by 1-2 degrees and improving resistance to condensation. The corrugated shape adds strength. Bent corners – not notched or open joints – create a continuous impermeable metal barrier around the entire perimeter, keeping moisture out and argon in.

Minnkota Windows offers an all-climate glass which delivers excellent year-round performance. Or, the ultimate performance glass, which delivers the perfect balance of solar control and high-visibility with no room-darkening tints while providing the highest level of energy savings.

Whatever your preference, you can rest assured that Cardinal Glass Industries provides the most reliable and energy efficient glass systems in the industry.



Euro Series Windows and Doors

Nothing has more impact on the look of a house than its windows and doors. It has never been more true than with the Euro Series. The tilt-turn feature offers three-in-one performance. Closed, it has the look and performance of a fixed window. One turn of the handle allows it to tilt in from the top to provide ventilation while still providing security. One more turn allows for complete inward-opening. The perfect blend of performance and aesthetics.

The Euro Series Tilt & Slide is a premium door solution for spaces that do not allow for inswing doors. The unique sash design tilts and slides parallel to the fixed unit with the touch of a finger.

Features

- 3 1/4" frame
- Fusion-welded for performance, strength and durability
- Multi-chambered design insulates well, reducing heat and sound transfer
- Unmatched security with multi-locking mechanisms
- 1" oa. dual pane IG thickness
- 1 3/8" oa. triple pane IG thickness available
- InvisiScreen standard

Color Options

Interior:

Dark Woodgrain, Heartwood, Irish Oak, Maple and White

Exterior:

Almond, Brick Red, Brown, Bronze, Dakota Sand, Gray, Forest Green, Mocha and White

Custom colors available

Hardware:

Titanium, Silver and White



Casement, Awning and Picture Windows

Our casement windows with classic detailing and state-of-the-art engineering provide years of carefree enjoyment. Our awning and picture windows offer trouble-free operation while keeping the elements out and the sightlines clean.

Features

- 3 1/4" frame
- Fusion-welded for performance, strength and durability
- Unmatched security with multi-locking mechanisms
- Nesting handle
- Concealed hinges and crank mechanisms
- Interior glazing
- Architectural, standard and egress hardware options
- 13/16" oa. dual pane IG thickness
- 1 3/8" oa. triple pane IG thickness available
- InvisiScreen standard
- Blinds between the glass optional on casement and picture windows

Color Options

Interior:

Almond, Clay, Dark Woodgrain, Heartwood, Irish Oak, Maple and White

Exterior:

Almond, Brick Red, Brown, Bronze, Dakota Sand, Clay, Gray, Forest Green, Mocha and White

Custom colors available

Hardware:

Almond, Clay, Brown, Dark Brown, White, Antique Brass, Brass, Oil-Rubbed Bronze and Brushed Nickel



Double-Hung and Double-Slider Windows

Whether double-hung or double-slider these attractive classics fit the bill. Double-hung windows offer safety and security as well as inward-tilt that allows for easy cleaning. Double-sliders operate effortlessly and offer lift-out sashes. Both combine the craftsmanship of a simpler time with the technology and convenience of today.

Features

- 3 1/4" frame
- Fusion-welded for performance, strength and durability
- Either tilt-in or lift-out sashes for easy cleaning
- Standard fliplock
- Sloped sill
- Interior glazing
- Architectural and standard hardware options
- 1" oa. dual and triple pane IG thickness
- Fully weatherstripped for energy efficiency
- InvisiScreen standard

Color Options

Interior:

Almond, Clay, Dark Woodgrain, Heartwood, Irish Oak, Maple and White

Exterior:

Almond, Brick Red, Brown, Bronze, Dakota Sand, Clay, Gray, Forest Green, Mocha and White

Custom colors available

Hardware:

Almond, Clay, Antique Brass, Dark Brown and White



Single-Hung/Slider and Sliding Patio Doors

Single-hung and single-slider windows offer the most economic solution while featuring the quality and craftsmanship of Minnkota. These options allow for versatile design and energy savings. Clean, simple lines make them a pleasure to look at and through.

Features

- 3 1/4" frame
- Fusion-welded for performance, strength and durability
- Multi-chambered design insulates well, reducing heat and sound transfer
- Standard fliplock for windows
- Dual lock handle on patio doors
- 3/4" oa. dual pane IG thickness for single-hung and single-slider
- 1" oa. dual and triple pane IG thickness for patio door
- InvisiScreen standard
- Optional pet screen on patio door
- Optional blinds between the glass on sliding patio door

Color Options

Windows

Interior and exterior:

Almond, Clay and White

Hardware:

Almond, Clay and White

Patio Doors

Interior:

Almond, Clay, Dark Woodgrain, Heartwood, Irish Oak, Maple and White

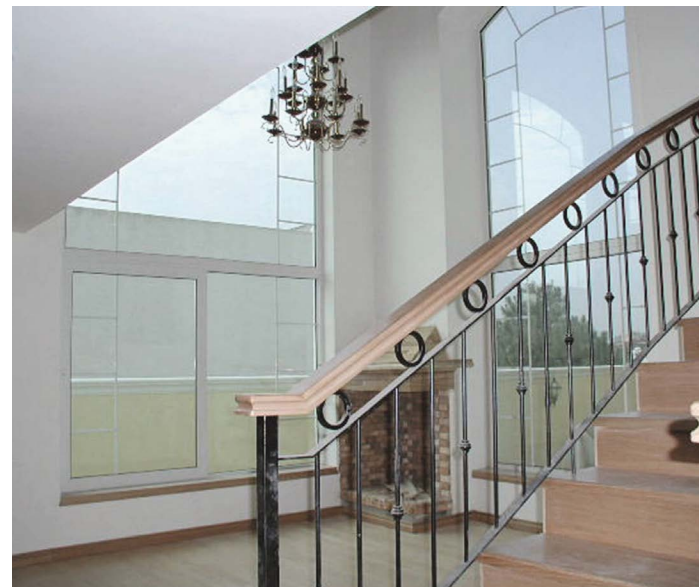
Hardware:

Almond, Clay, Antique Brass, Brown, Brushed Chrome, Brushed Nickel, Chrome, Dark Brown, Oil-Rubbed Bronze, Pewter and White

Exterior:

Almond, Brick Red, Brown, Bronze, Dakota Sand, Clay, Gray, Forest Green, Mocha and White

Custom colors available



Bay, Bow and Specialty Windows

Let your creativity soar to new heights. Add light and space to any room with a bay or bow window. These classic styles add a view while opening a room. Or let yourself go with our specialty windows. Built to your specifications, Minnkota can solve any design challenge.

Features

Bay and Bow:

- Fusion-welded for performance, strength and durability
- Adjustable support system included
- Available in casement, picture or double-hung
- Head and seat board standard
- InvisiScreen standard (where applicable)

Specialty windows vary by your imagination and design requirements.

Color Options

Bay and Bow

Interior:

Almond, Clay, Dark Woodgrain, Heartwood, Irish Oak, Maple and White

Exterior:

Almond, Brick Red, Brown, Bronze, Dakota Sand, Clay, Gray, Forest Green, Mocha and White

Custom colors available

Hardware:

Almond, Clay, Antique Brass, Bright Brass, Brown, Dark Brown, Oil-Rubbed Bronze, Brushed Nickel and White



Colors, Options and Accessories

Interior Colors



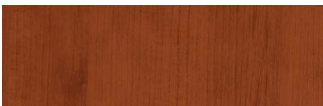
White



Almond



Clay



Heartwood



Dark Woodgrain



Irish Oak



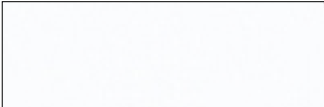
Maple

Colors and hardware finishes are shown for reference only. Please see dealer for actual color sample.



Exterior custom colors available upon request. See dealer for more information.

Exterior Colors



White



Almond



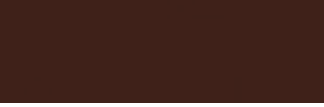
Clay



Gray



Brick Red



Brown



Bronze



Dakota Sand

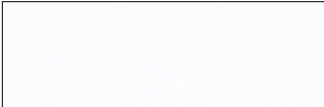


Forest Green



Mocha

Hardware Finishes/Colors



White



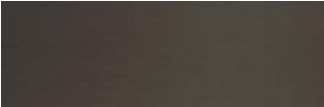
Antique Brass



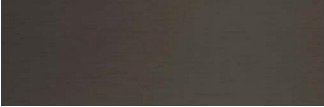
Brown



Brushed Nickel



Oil-Rubbed Bronze



Dark Brown



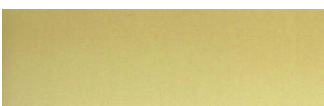
Silver



Almond



Clay



Bright Brass



Brushed Chrome



Chrome



Pewter



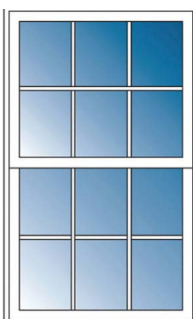
Titanium

Not all hardware colors/finishes are available on all styles of windows/doors.

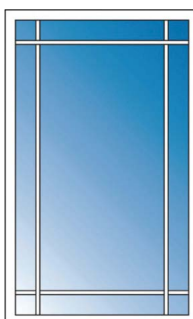
Keyed hardware optional for patio doors.

Please see dealer or website for specific hardware availability.

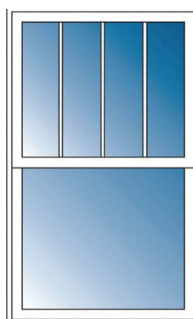
Grids



Colonial



Prairie



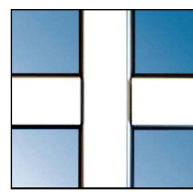
Vertical



Contour (Std.)



Flat



SDL

Interior Returns



1/2" Drywall Return

Almond and White



3/4" Jamb Return

Dark Woodgrain, Heartwood, Irish Oak, Maple, Almond and White

Pre-Finished Casing



Available in 2 1/4" and 3 1/4" Colonial style.

Extension Jamb



Available in 4" and 8" widths (6" white only). 12' lengths or cut sizes. Shipped loose or applied.

Glass



Dual Pane



Triple Pane



BBG



LoE² - 272



LoE³ - 366

Brickmoulding



2" Retro



1 1/2" Std



3 1/2"



1 1/2" Retro

Also Available: 2" Retro w/ Sill, 2" w/ Sill, 1 1/2" Retro w/ Sill, 1 1/2" Cut for J-Channel and Sill Expander

All exterior color options available

Windows For Your World

Limited Lifetime Warranty (Non-prorated and transferable one time):

Lifetime – Workmanship of window, including labor

Lifetime – Insulated glass units, labor included for 20 years

Lifetime – Accidental glass breakage

15 years – Exterior coated finish, including labor

10 years – Blinds between the glass

Restrictions or fees may apply.

Visit www.minnkotawindows.com or ask your representative for complete warranty details.



In addition to the NFRC rating, all standard Minnkota Windows products are ENERGY STAR® certified.



2324 Main Ave. W., West Fargo, ND 58078

800.318.9442

701.282.7025

866.282.7435 (f)

www.minnkotawindows.com

